

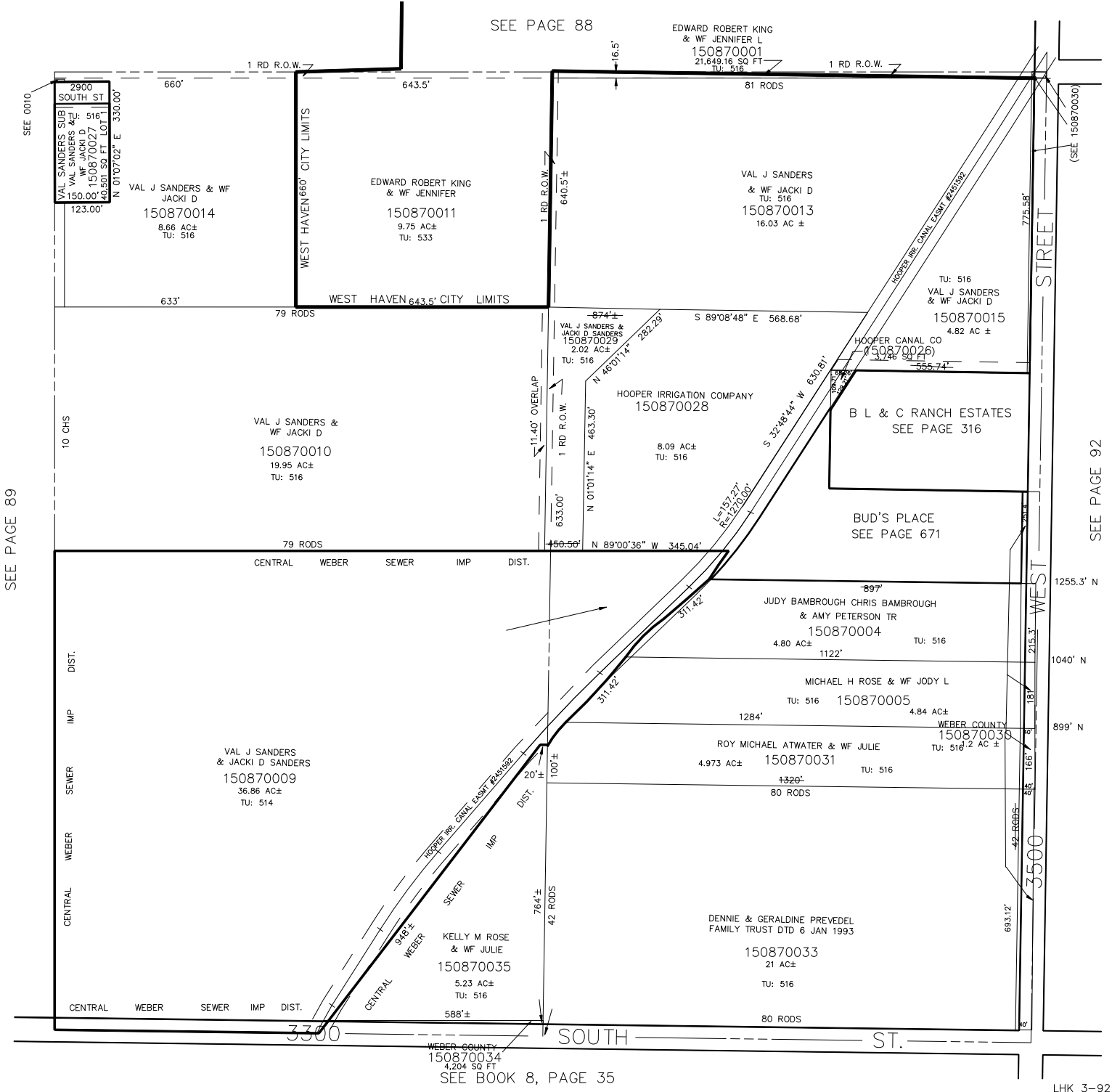
S.E. 1/4
SECTION 33, T.6N., R.2W., S.L.B. & M.

IN WEBER COUNTY & WEST HAVEN CITY

TAXING UNIT: 514,516,533

SCALE 1" = 200'

SEE PAGE 88



SEE PAGE 89

SEE PAGE 92

WEBER COUNTY
150870034
4,204.80 SQ FT
SEE BOOK 8, PAGE 35